

AOC



Safety Instructions

Safety precautions and maintenance



WARNING: Use of controls, adjustments or procedures other than those specified in this documentation may result in exposure to shock, electrical hazards and/or mechanical hazards.

Read and follow these instructions when connecting and using your Smart Signage Media Player:

Operation:

- Keep the Smart Signage Media Player out of direct sunlight and away from stoves or any other heat sources.
- When positioning the Smart Signage Media Player, make sure the power plug and outlet are easily accessible.
- If your adapter is missing, please contact your local service center.
- Do not subject the Smart Signage Media Player to severe vibration or high impact conditions during operation.
- Do not knock or drop the Smart Signage Media Player during operation or transportation.

Maintenance:

- Unplug the Smart Signage Media Player if you are not going to use it for an extensive period of time.
- Unplug the Smart Signage Media Player if you need to clean it with a slightly damp cloth. Never use organic solvent, such as, alcohol, or ammonia-based liquids to clean your Smart Signage Media Player.
- To avoid the risk of shock or permanent damage to the set, do not expose the Smart Signage Media Player to dust, rain, water or an excessively moist environment.
- If your Smart Signage Media Player becomes wet, wipe it with dry cloth as soon as possible.
- Do not store or use the Smart Signage Media Player in locations exposed to heat, direct sunlight or extreme cold.
- In order to maintain the best performance of your Smart Signage Media Player and ensure a longer lifetime, we strongly recommend using the Smart Signage Media Player in a location that falls within the following temperature and humidity ranges.
 - Temperature: 0-40°C 32-104°F
 - Humidity: 20-80% RH

Service:

- The casing cover should be opened only by qualified service personnel.
- If there is any need for repair or integration, please contact your local service center.



If your Smart Signage Media Player does not operate normally, having followed the instructions set out in this document, please contact a technician or your local service center.

Read and follow these instructions when connecting and using your Smart Signage Media Player:



- Unplug the Smart Signage Media Player if you are not going to use it for an extensive period of time.
- Unplug the Smart Signage Media Player if you need to clean it with a slightly damp cloth. The screen may be wiped with a dry cloth when the power is off. However, never use alcohol, solvents or ammonia-based liquids.
- Consult a service technician if the Smart Signage Media Player does not operate normally when you have followed the instructions in this manual.
- The casing cover should be opened only by qualified service personnel.
- Keep the Smart Signage Media Player dry. To avoid electric shock, do not expose it to rain or excessive moisture.
- To avoid the risk of shock or permanent damage to the set do not expose the Smart Signage Media Player to rain or excessive moisture.
- When positioning the Smart Signage Media Player, make sure the power plug and outlet are easily accessible.

Taiwan

低功率射頻器材技術規範：

取得審驗證明之低功率射頻器材，非經核准，公司、商號或使用者均不得擅自變更頻率、加大功率或變更原設計之特性及功能。

低功率射頻器材之使用不得影響飛航安全及干擾合法通信；經發現有干擾現象時，應立即停用，並改善至無干擾時方得繼續使用。

前述合法通信，指依電信管理法規定作業之無線電通信。低功率射頻器材須忍受合法通信或工業、科學及醫療用電波輻射性電機設備之干擾。

在 5. 25-5. 35 秊赫頻帶內操作之無線資訊傳輸設備，限於室內使用。

應避免影響附近雷達系統之操作

高增益指向性天線只得應用於固定式點對點系統。

注意：若電池未正確更換，可能會爆炸。請用原廠建議之同款或同等級的電池來更換。

請依原廠指示處理廢棄電池。

China RoHS

根据中国大陆《电器电子产品有害物质限制使用管理办法》，以下部分列出了本产品中可能包含的有害物质的名称和含量。

部件名称	有害物质					
	铅 (Pb)	汞 (Hg)	镉 (Cd)	六价铬 (Cr (VI))	多溴联苯 (PBB)	多溴二苯醚 (PBDE)
电路板组件*	X	○	○	○	○	○
外壳	○	○	○	○	○	○
天线	X	○	○	○	○	○
电源适配器	X	○	○	○	○	○
遥控器	X	○	○	○	○	○
电源线/连接线	X	○	○	○	○	○
金属，塑胶配件 (螺丝，背架)	X	○	○	○	○	○

本表格依据SJ/T 11364 的规定编制。

*: 电路板组件包括印刷电路板及其构成的零部件，如电阻、电容、集成电路、连接器等。

O: 表示该有害物质在该部件所有均质材料中的含量均在 GB/T 26572规定的限量要求以下。

X: 表示该有害物质至少在该部件的某一均质材料中的含量超出GB/T 26572规定的限量要求。

上表中打“X”的部件，应功能需要，部分有害物质含量超出GB/T 26572规定的限量要求，但符合欧盟 RoHS法规要求（属于豁免部分）。

备注：上表仅做为范例，实际标示时应依照各产品的实际部件及所含有害物质进行标示。



环保使用期限

此标识指期限（十年），电子电气产品中含有的有害物质在正常使用的条件下不会发生外泄或突变，电子电气产品用户使用该电子电气产品不会对环境造成严重污染或对其人身、财产造成严重损害的期限。

《废弃电器电子产品回收处理管理条例》提示性说明

为了更好地关爱及保护地球，当用户不再需要此产品或产品寿命终止时，请遵守国家废弃电器电子产品回收处理相关法律法规，将其交给当地具有国家认可的回收处理资质的厂商进行回收处理，不当利用或者处置可能会对环境和人类健康造成影响。

單元Unit	限用物質及其化學符號					
	鉛 (Pb)	汞 (Hg)	鎘 (Cd)	六價鉻 (Cr ⁺⁶)	多溴聯苯 (PBB)	多溴二苯醚 (PBDE)
電路板	—	○	○	○	○	○
外殼	○	○	○	○	○	○
天線	—	○	○	○	○	○
電源供應器	—	○	○	○	○	○
遙控器	—	○	○	○	○	○
影音線材	—	○	○	○	○	○
金屬，塑膠配件 (螺絲，背架)	○	○	○	○	○	○

備考1. “○” 係指該項限用物質之百分比含量未超出百分比含量基準值。

備考2. “—” 係指該項限用物質為排除項目。

警告使用者：

此為甲類資訊技術設備，於居住環境中使用時，可能會造成射頻擾動，在此種情況下，使用者會被要求採取某些適當的對策。



廢電池請回收

For better environmental protection, waste batteries should be collected separately for recycling or special disposal.

Table Of Contents

- 1. Unpacking and Installation 1
 - 1.1. Unpacking 1
 - 1.2. Package Contents..... 1
 - 1.3. Installation Notes..... 1
 - 1.4. Mounting and installation 2
 - 1.5. Input/Output Terminals 3
 - 1.6. Remote Control 4
- 2. Connection 5
- 3. Operation..... 6
 - 3.1. Overview 6
 - 3.2. Settings 6
 - 3.3. AOC Cloud CMS 10
 - 3.4. Clone..... 10
 - 3.5. File Manager11
 - 3.6. How to install/uninstall APK.....11
 - 3.7. Media Player introduction:..... 13
 - 3.8. PDF Player..... 13
 - 3.9. Schedule 14
- 4. Multimedia Codec Formats 15
- 5. Cleaning 17
- 6. Technical Specifications 18

1. Unpacking and Installation

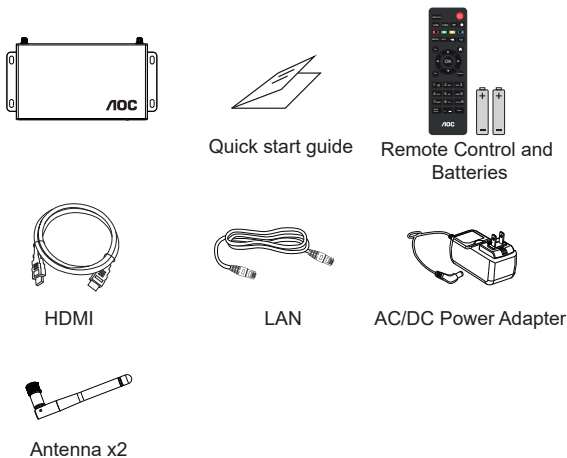
1.1. Unpacking

- This product is packed in a carton, together with the standard accessories.
- Any other optional accessories will be packed separately.
- After opening the carton, ensure that the contents are complete and in good condition.

1.2. Package Contents

Please verify that you received the following items with your package content:

- Smart Signage Media Player
- Quick start guide
- Remote control with batteries
- HDMI cable
- LAN cable
- AC/DC power adapter
- Antenna x2



* Differences according to regions

AC/DC Power Adapter is an option from illustrated above.

NOTES:

- For all other regions, apply a power adapter that conforms to the AC voltage of the power socket and has been approved by and complies with the safety regulations of the particular country.
Applicable power adapter specifications:
Output voltage: +12.00VDC
Minimum voltage: +11.40VDC
Maximum voltage: +12.60VDC
Output current: 0.0A~ 3.00A
Note: Operating temperature: 0~40 degrees
- You might like to save the smart signage media player accessories and its packing material for the afterward shipment.

1.3. Installation Notes

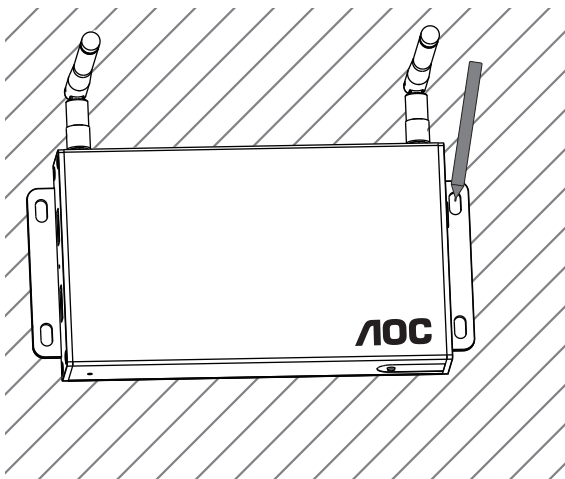
- Due to the high power consumption, always use the plug exclusively designed for this product. If an extended line is required, please consult your service agent.
- Avoid installing the product in the kitchen, bathroom or any other places with high humidity so as not to shorten the service life of the electronic components.
- The product can normally operate only under 3000m in altitude. In installations at altitudes above 3000m, some abnormalities may be experienced.

1.4. Mounting and installation

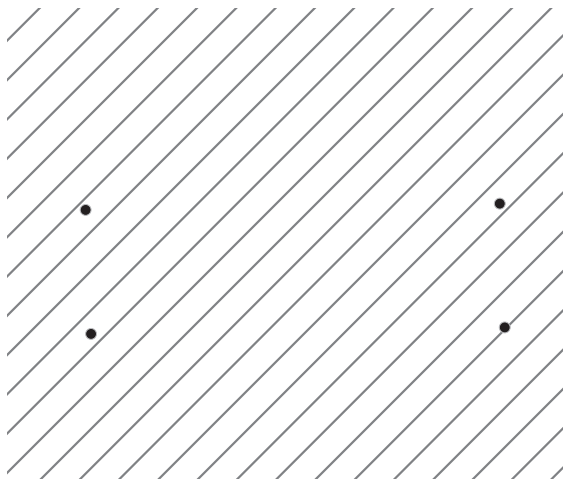
To install CBOX-R1 to the wall:

1. Put the CBOX-R1 on the wall, use a marker pen to make remarks for the suitable screws positions.
2. Use a screwdriver to insert screws (x4) to the wall.

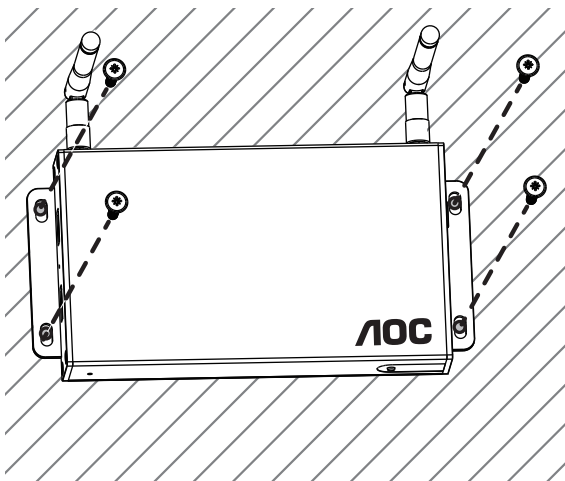
1



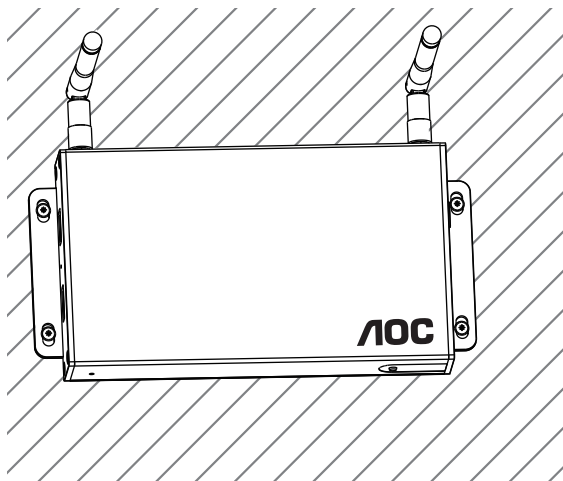
2



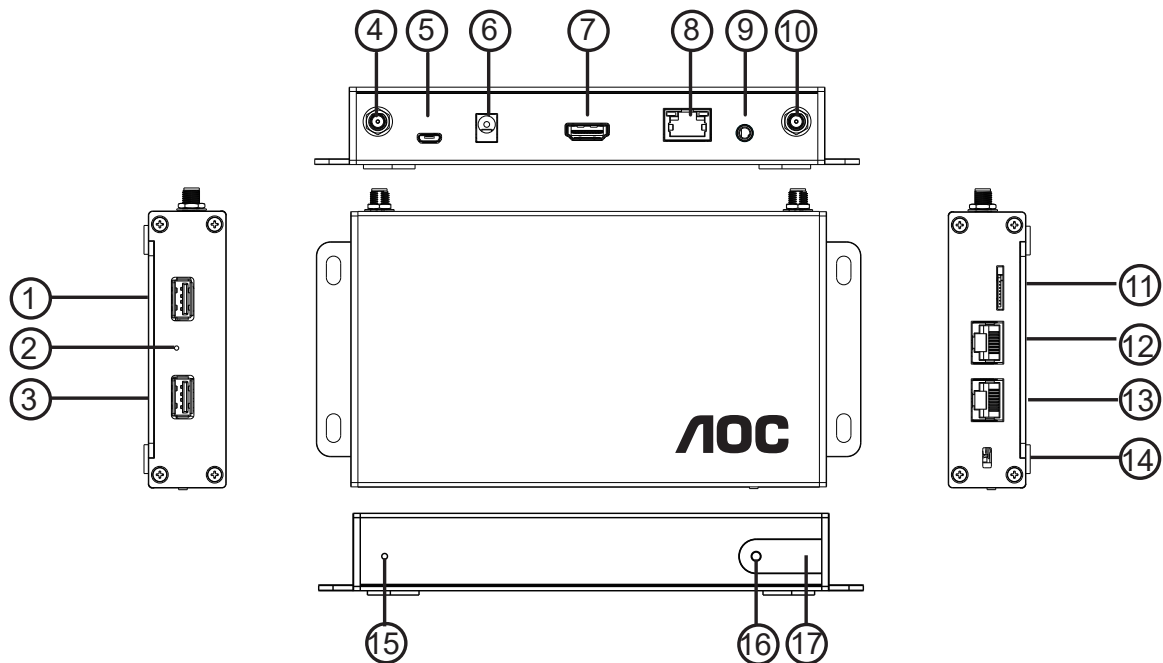
3



4



1.5. Input/Output Terminals



1. USB port
2. Reset button
3. USB port
4. Antenna port
5. ADB port
6. DC in
7. HDMI out
8. LAN port
9. Earphone out
10. Antenna port
11. MICRO SD CARD
12. RS232C in
13. RS232C out
14. Kensington anti-theft lock
15. Power Indicator
16. Power Button
17. IR receiver

1.6. Remote Control

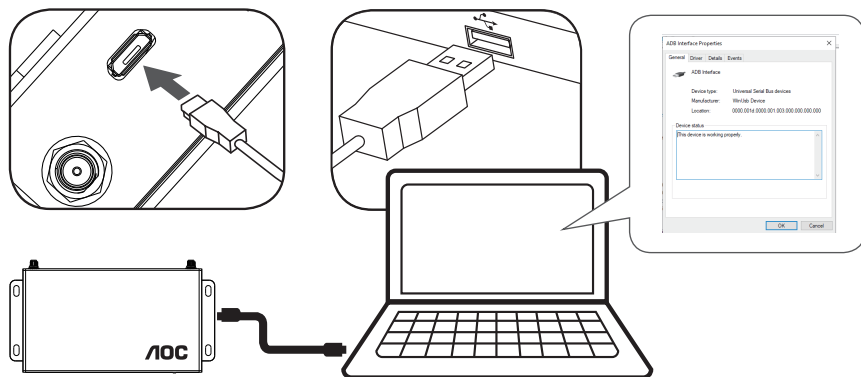
1.6.1. General functions



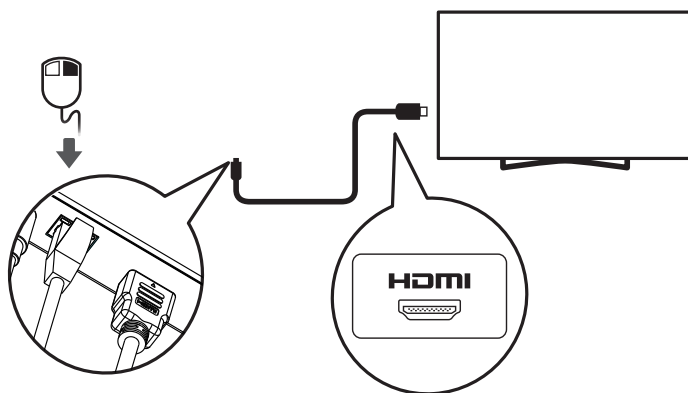
- ① **[POWER] POWER button**
Turn the CBOX-R1 on or put the CBOX-R1 to standby mode.
- ② **SOURCE button**
Choose input source.
- ③ **USB**
Enter the file manager of the U Disk.
- ④ **CMS**
Enter/exit CMS Client.
- ⑤ **HDMI/PC**
Reserved.
- ⑥ **Time Setting**
Enter the date and time setting page.
- ⑦ **[PLAY] buttons**
Control playback of media files.
- ⑧ **MENU button**
Access the menu options for current application. (available for Media Player, PDF Player)
- ⑨ **INFO button**
Show Information about application.
- ⑩ **[MUTE] MUTE button**
Press to turn the mute function on/off.
- ⑪ **BACK button**
Return to the previous menu page or exit from the previous function.
- ⑫ **VOL+ button**
Increase the volume level.
- ⑬ **VOL- button**
Decrease the volume level.
- ⑭ **HOME button**
Access the OSD menu.
- ⑮ **OK button**
Confirm an entry or selection.
- ⑯ **OPTIONS button**
Reserved.
- ⑰ **[▲] [▼] [◀] [▶] NAVIGATION buttons**
Navigate through menus and choose items.
- ⑱ **[NUMERIC] buttons**
Enter numeric for network setting, and set up ID for ID mode.
- ⑲ **MultiView button**
Open multiple windows.
- ⑳ **Help button**
Reserved.

2. Connection

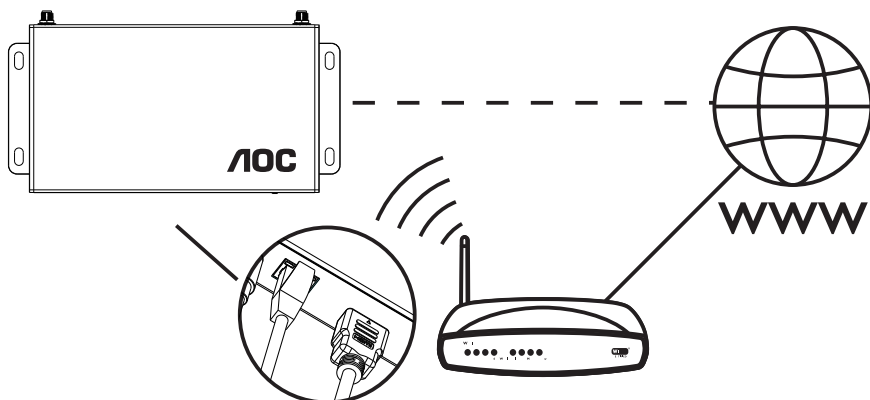
1. Using ADB port



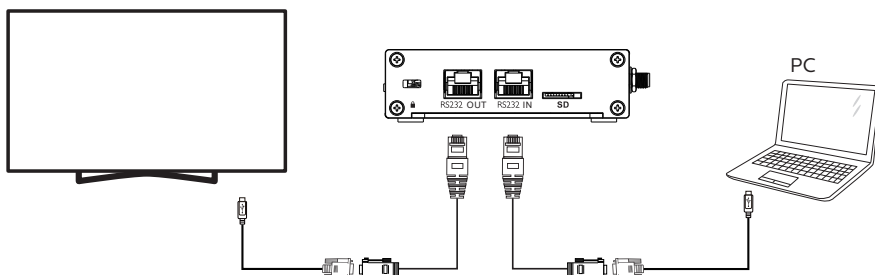
2. Using HDMI out



3. Wire-connecting to Network



4. Display control connection

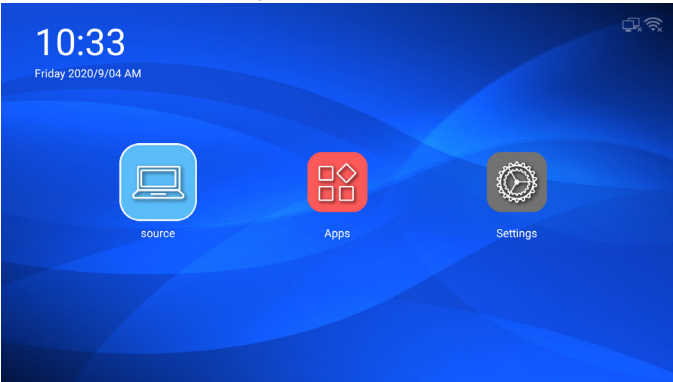


3. Operation

NOTE: The control button described in this section is mainly on the remote control unless specified otherwise.

3.1. Overview

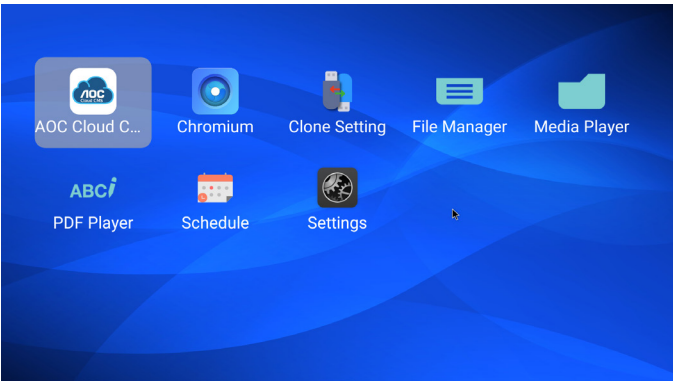
The default launcher page:



Source page: Choose input source. Press ▲ or ▼ button to choose CMS, PDF, Media, Custom or USB. Press [OK] button to confirm and exit.



Apps page: show all applications.



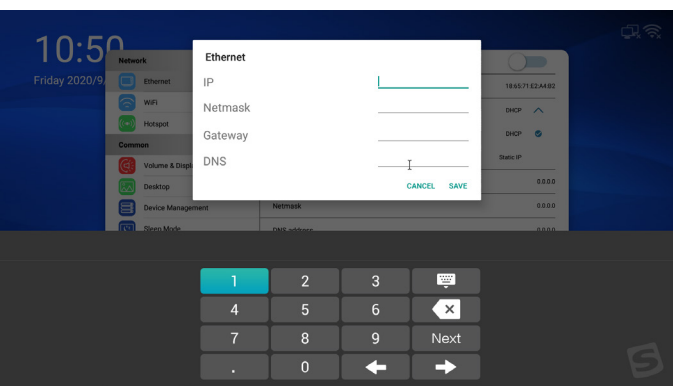
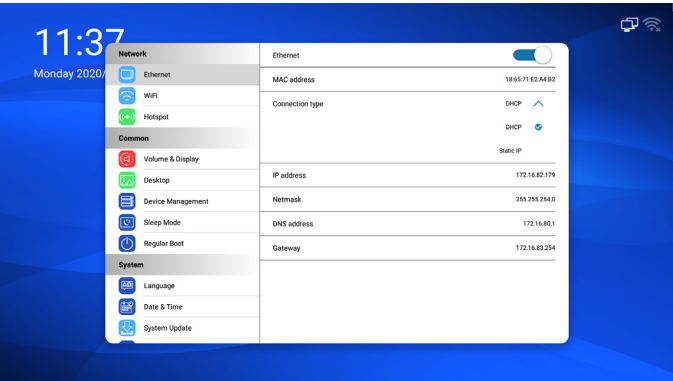
Settings page: go to set Network settings, Common settings, System settings.



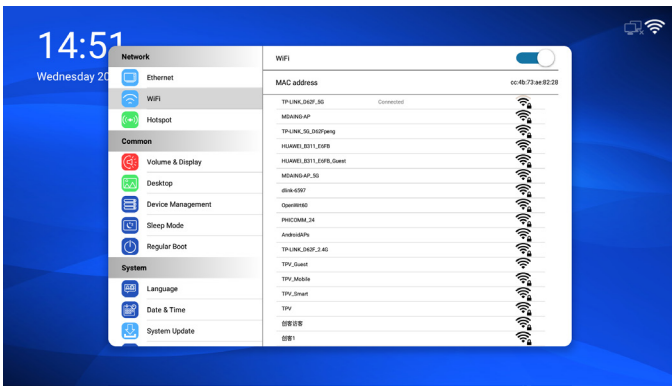
3.2. Settings

3.2.1. Network settings

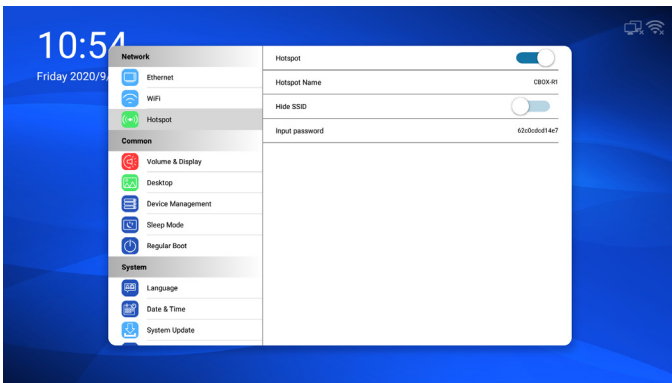
Ethernet: Enable/disable Ethernet connection
User can manually set Ethernet IP address, Netmask, DNS address and gateway.



WiFi: Enable/disable Wi-Fi connection.

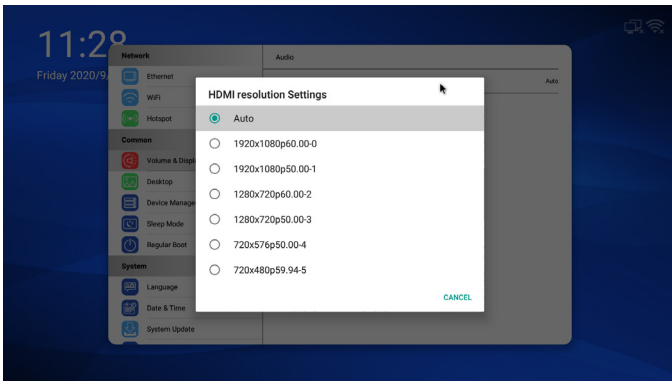
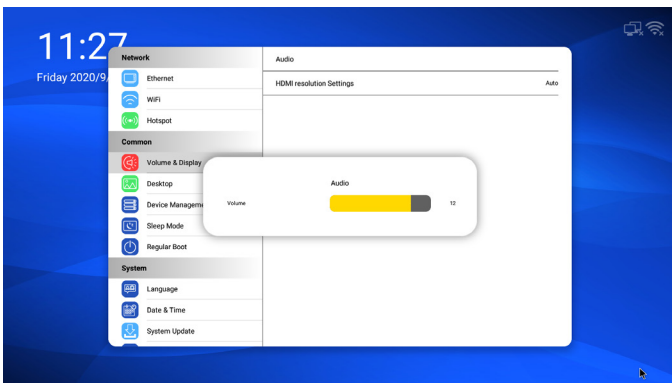


Hotspot: Enable/disable hotspot.

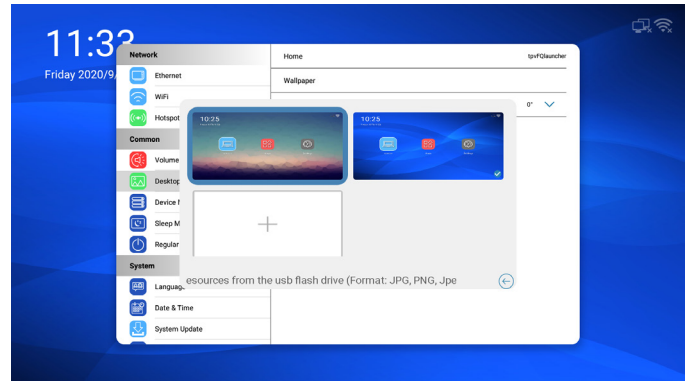
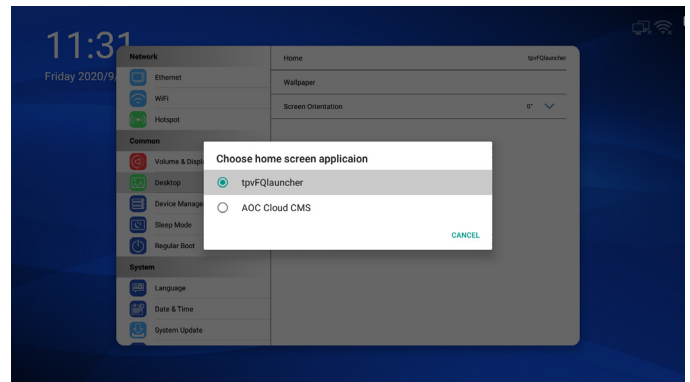


3.2.2. Common settings

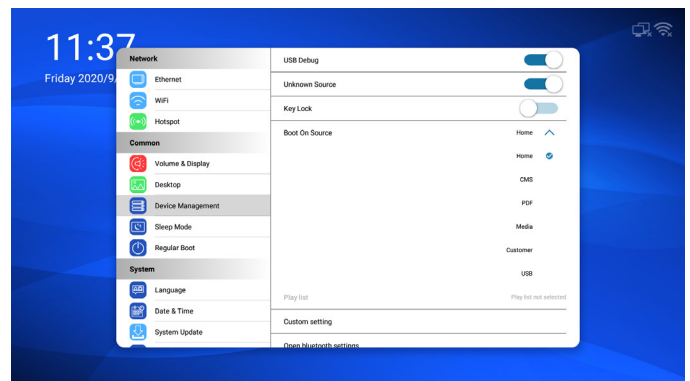
Volume & Display: adjust the volume and HDMI resolution settings.



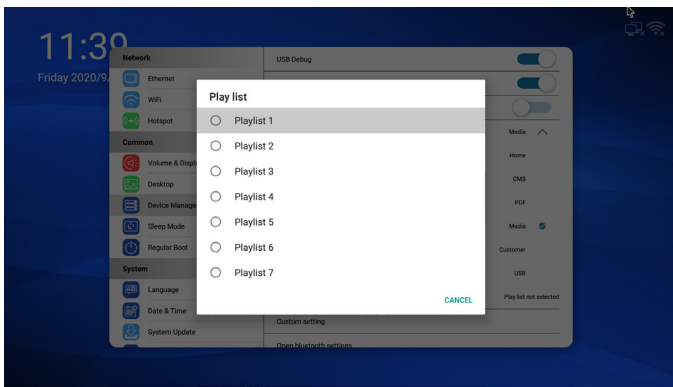
Desktop: choose the items [Home], [Wallpaper], [Screen Orientation] to set the default boot interface.



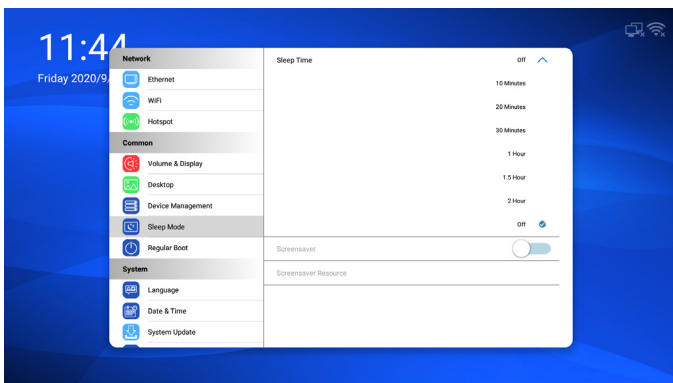
Device Management: choose the boot source.



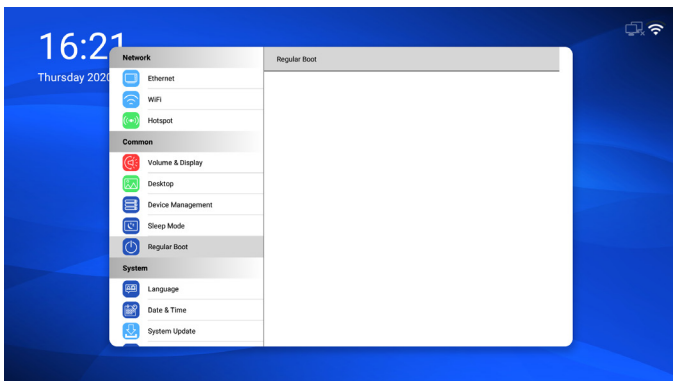
When setting Media or PDF as the boot source, the playlist can be edited.



Sleep Mode: choose to set Sleep time, Screensaver and Screensaver Resource.

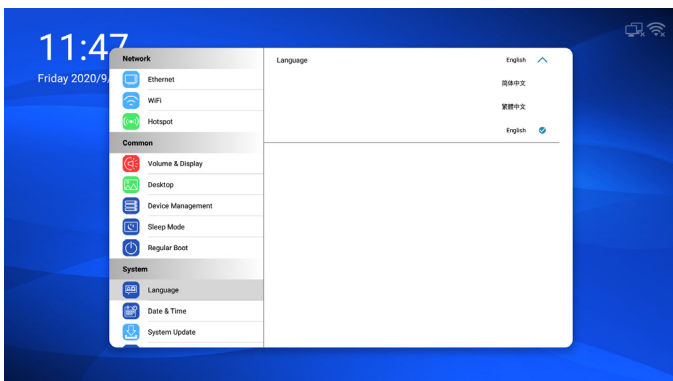


Regular Boot: choose to edit the Schedule about Start time, End time, Input source, Playlist, Volume, Enable etc.

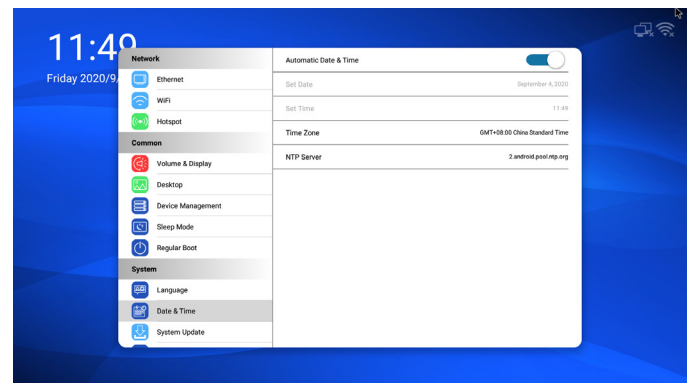


3.2.3. System settings

Language: Select the language used in the OSD menu.



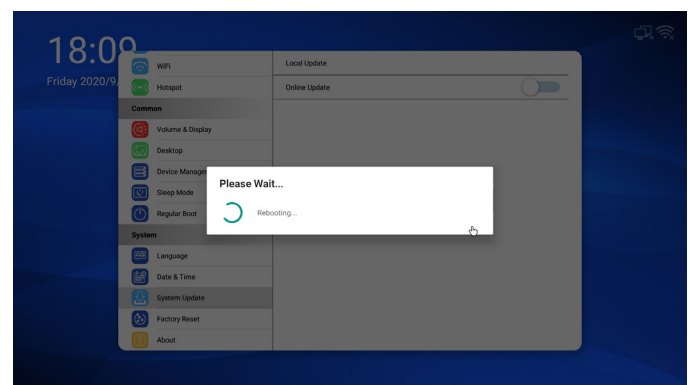
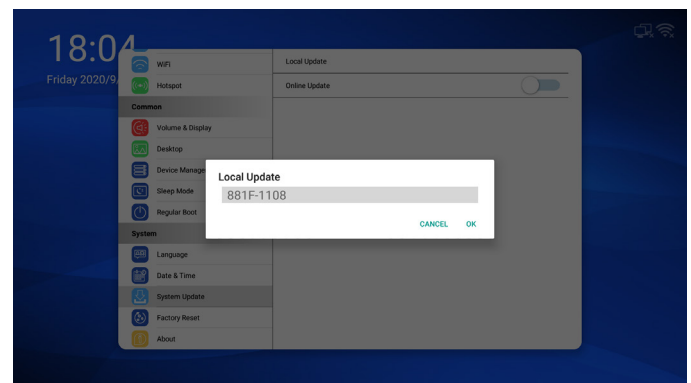
Date & Time: Adjust the current date and time.



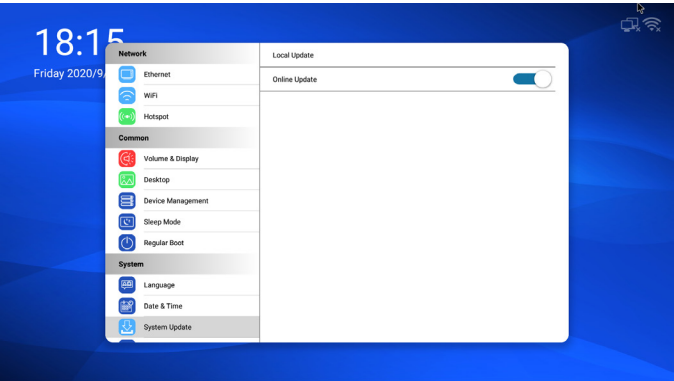
System Update: choose to update the system.

Local update: System will auto search "update.zip" in root folder of USB disk and SD card. If "update.zip" is found on the external storage, a list will be shown for user to select the file to update.

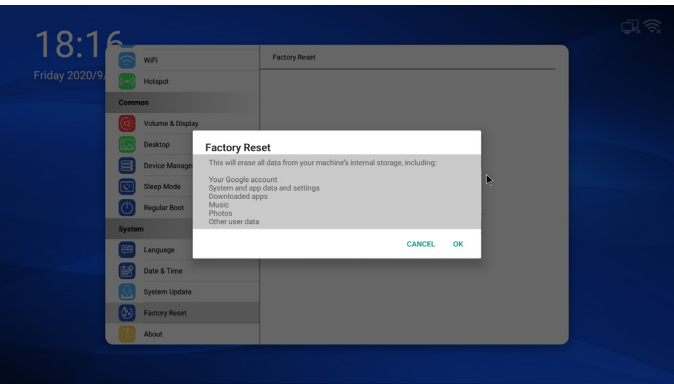
Once the file is selected from the list, the system starts rebooting and updating.



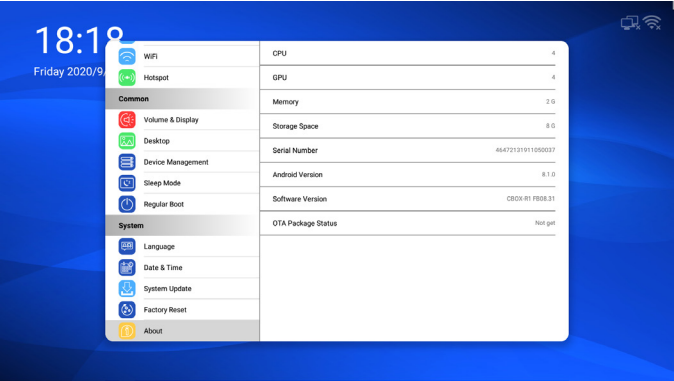
Online update: After enable this function, the device will periodically check whether there is a new version, and when a new version is detected, it will download automatically and prompt the user to install.



Factory Reset: Reset all customized settings to the factory default values.

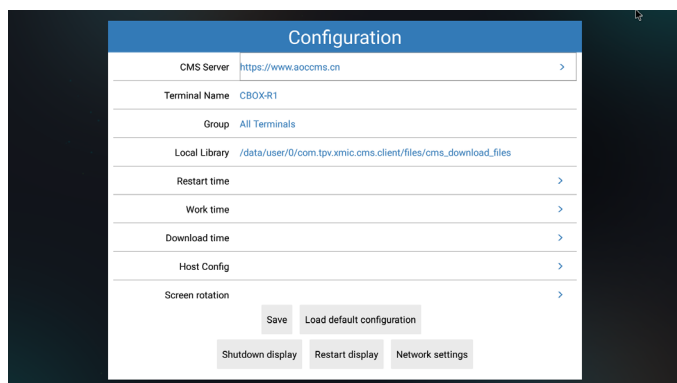


About: View the information about the system.



3.3. AOC Cloud CMS

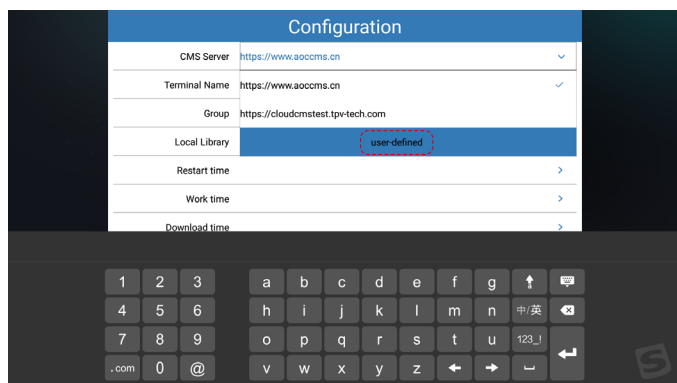
The AOC Cloud CMS has preset the AOC CN server www.aoccms.cn by default.



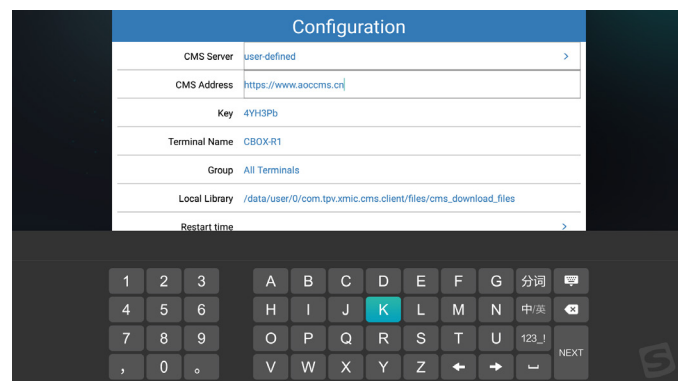
Use the up and down buttons on the remote control to select the ">" icon, and then press the remote control "ok".



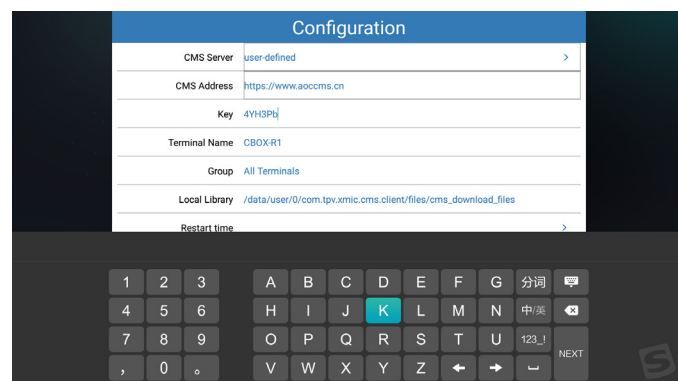
Select user-defined.



CMS Address

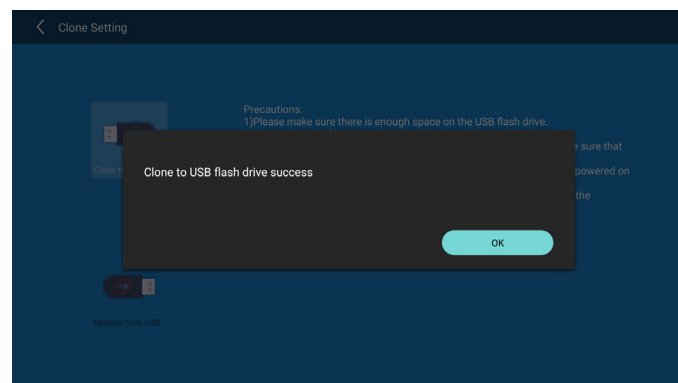
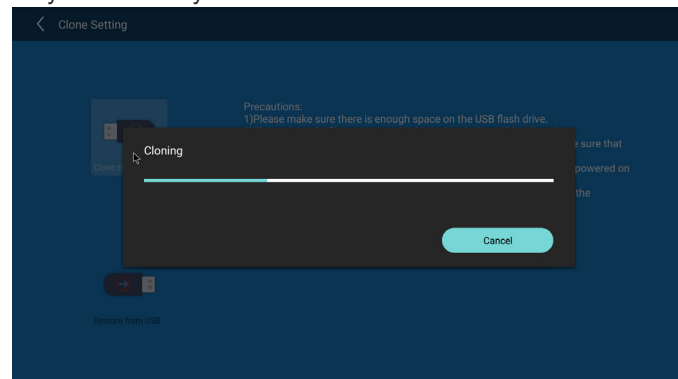


Key

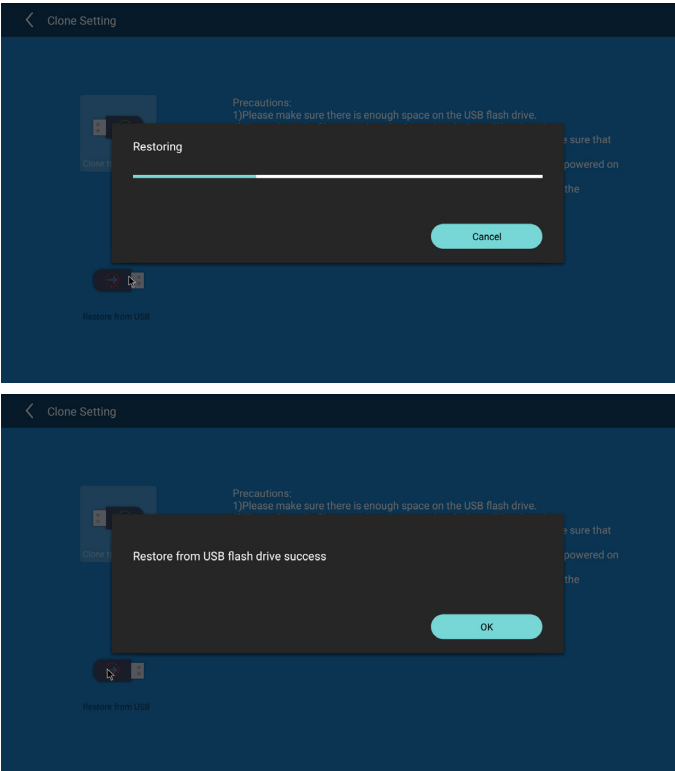


3.4. Clone

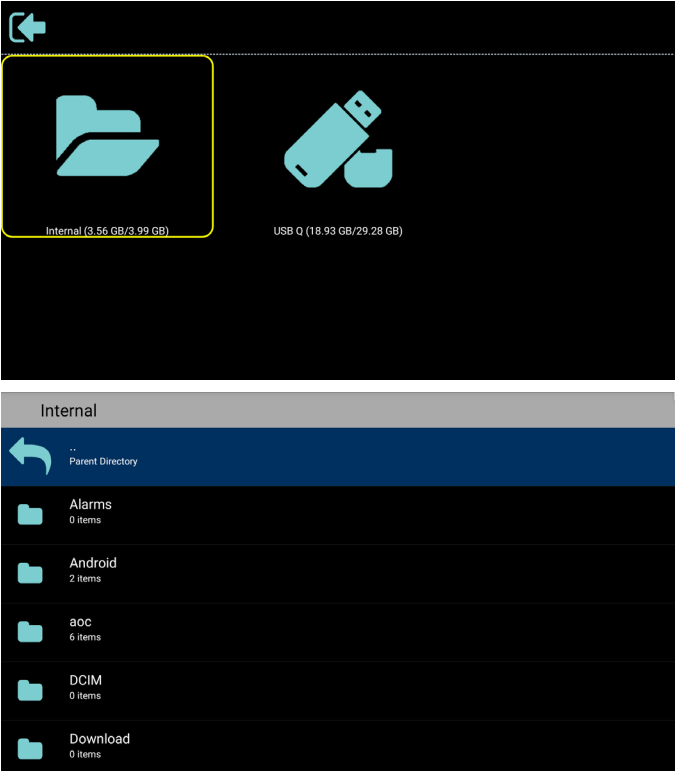
Click **Clone to U Disk** to copy the settings and Media Player PlayList/PDF PlayList of this device to USB Disk.



Click **Restore from U Disk** to restore the settings and Media Player Playlist/PDF Playlist backed up in the U disk to this device.

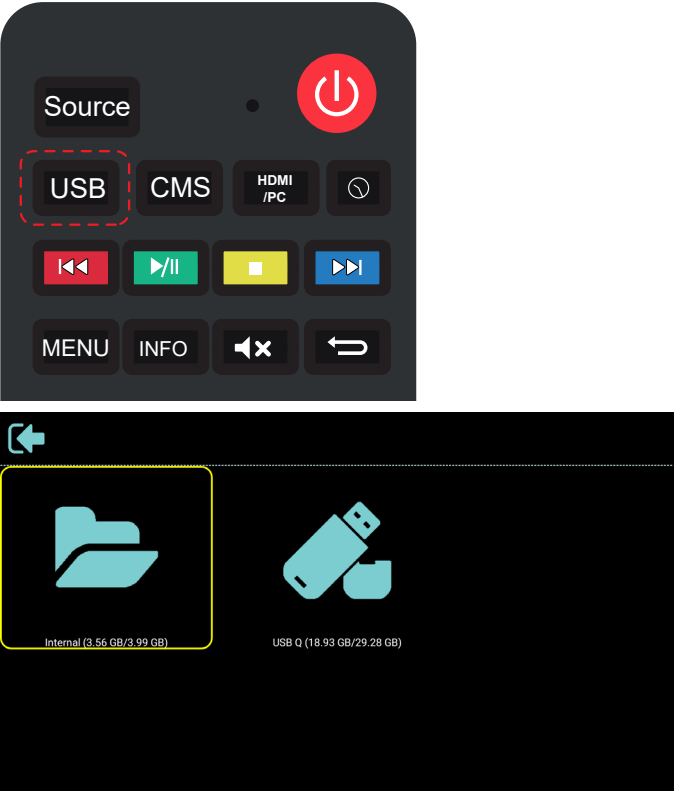


3.5. File Manager

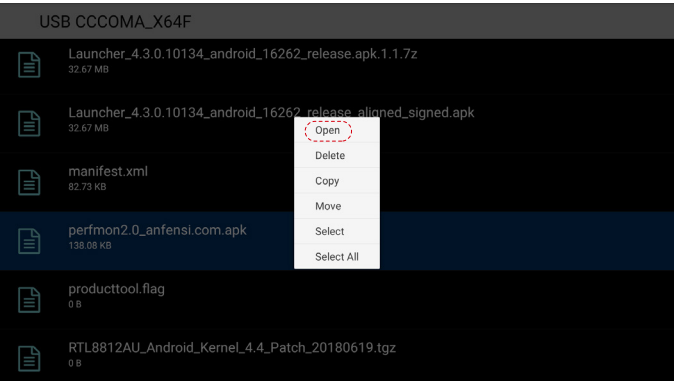


3.6. How to install/uninstall APK

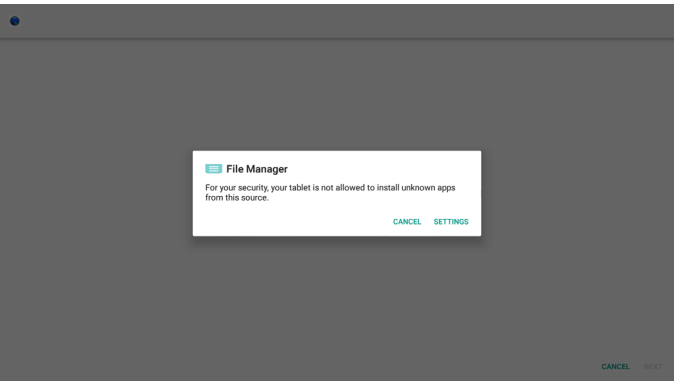
Copy your apk to internal memory or USB disk/SD card, and then plug into the BOX.
Use the Remote control select **USB** or from the apps page to enter the File manager.

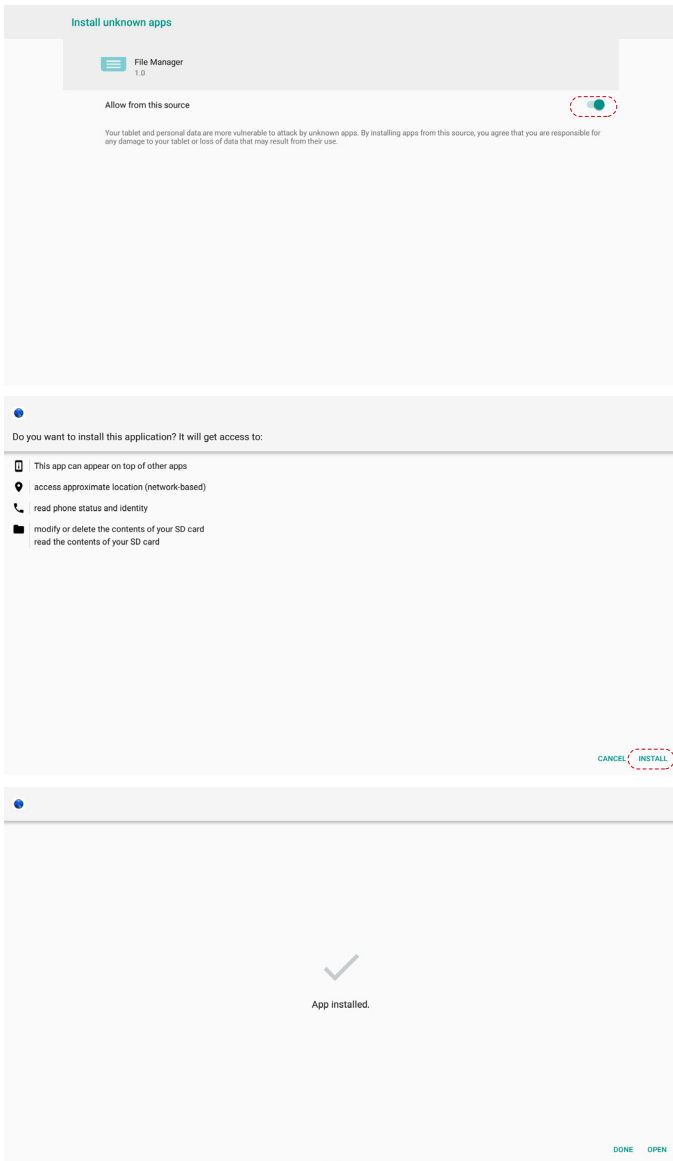


Select and open the file .apk

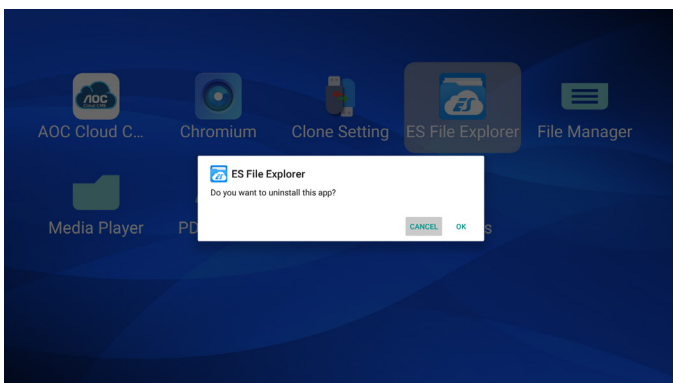


Set allowed to install unknown apps





Uninstall the Custom APK: Select the Custom install APK and long press the left mouse button or the remote control “OK” button to uninstall.



3.7. Media Player introduction:

Main page of Media Player, this page has three items:
“Play”, “Compose” and “Settings”.

Play : select playlist to play.

Compose: edit playlist.

Settings: set Media Player properties.

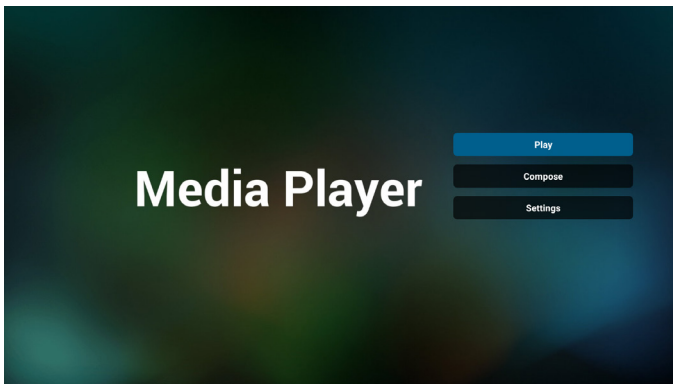
All media files should be placed in /aoc/ of root directory.

For example,

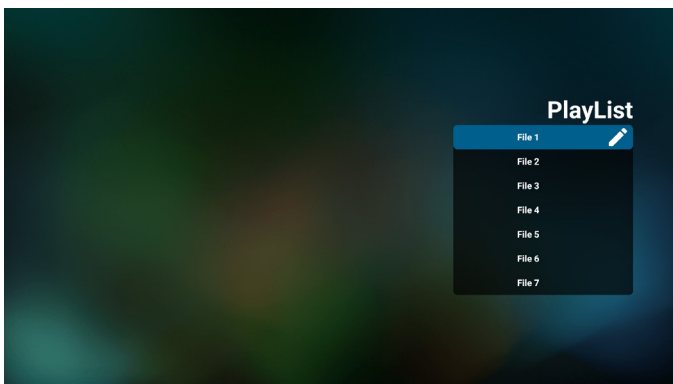
videos: {root dir of storage}/aoc/video/

photos: {root dir of storage}/aoc/photo/

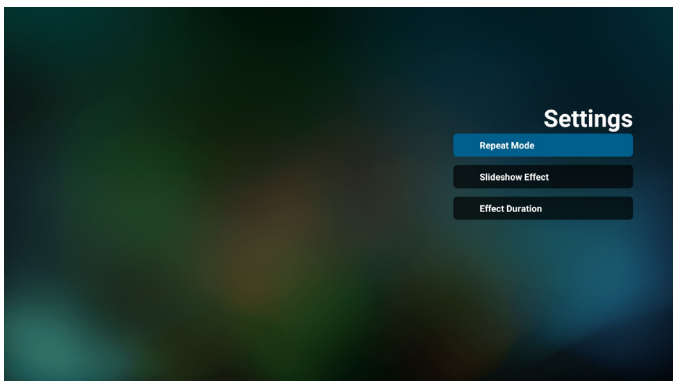
music : {root dir of storage}/aoc/music/



Open Media Player PlayList edit page.



Open Media Player slideshow effect edit page.



3.8. PDF Player

Main page of PDF Player, this page has three items:
“Play”, “Compose” and “Settings”.

Play: select playlist to play.

Compose: edit playlist.

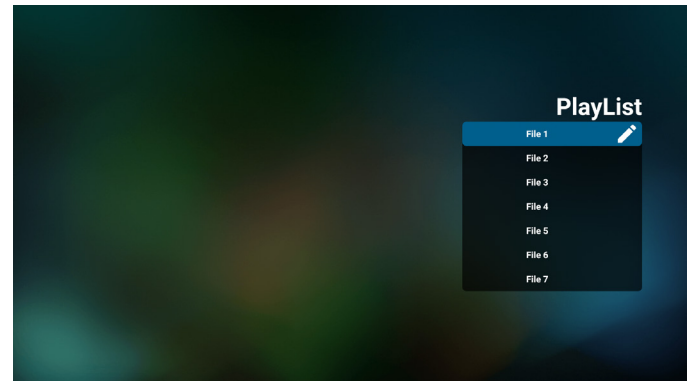
Settings: set PDF Player properties.

All media files should be placed in /aoc/ of root directory.

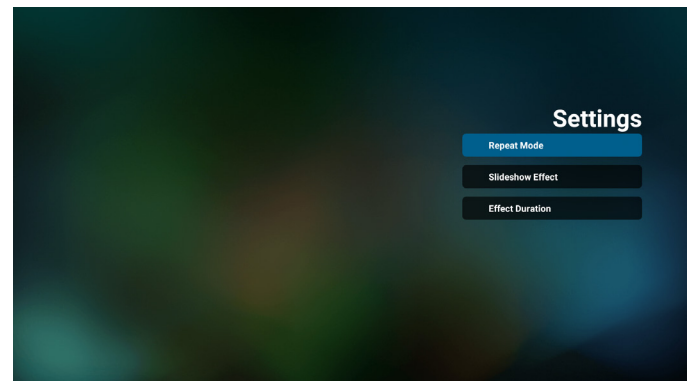
For example,

pdfs: {root dir of storage}/aoc/pdf/

Open PDF Player Play List edit page.

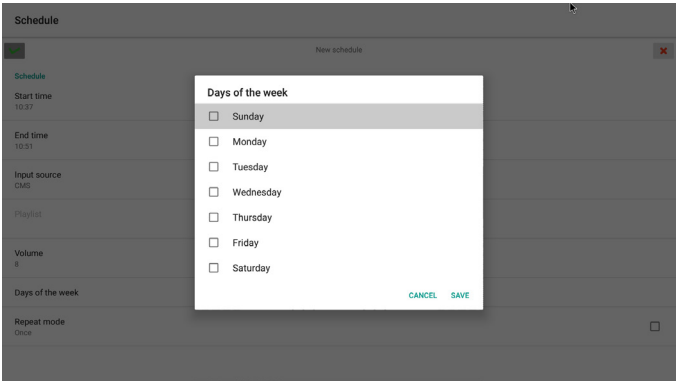
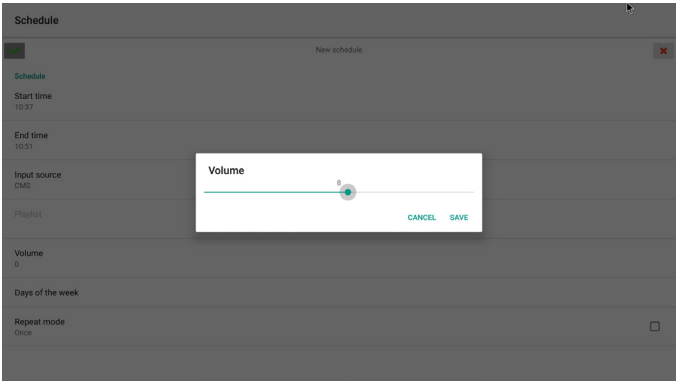
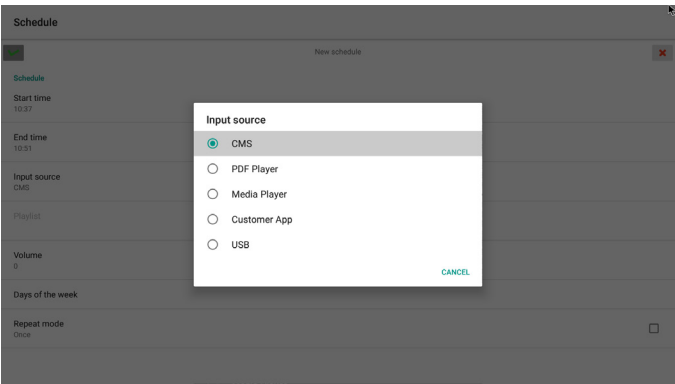
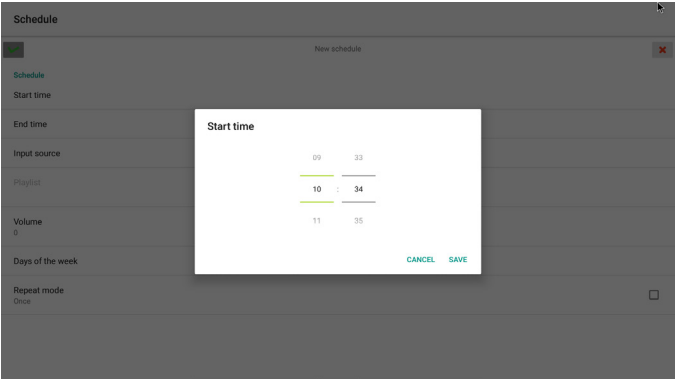
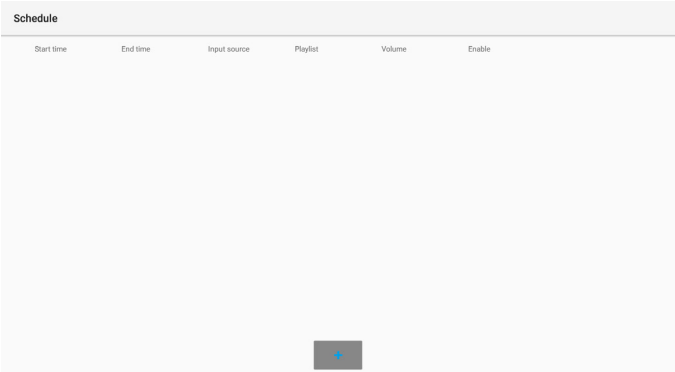


Open PDF Player effect edit page.



3.9. Schedule

Regular Boot: choose to edit the Schedule about Start time, End time, Input source, Playlist, Volume, Enable etc.



Click right mouse button or remote control ⬅ BACK button, then select SAVE to coomplete the settings.



4. Multimedia Codec Formats

Multimedia Codec Formats

Video Decode						
Type	Video Codec	Container	Decode	Encode	Channel	Remark
MPEG-1/2	MPEG-1/2	File Format: DAT, MPG, VOB, TS	V			Supported Image Size: 48x48pixels to 1920x1088pixels Maximum Frame Rate:30fps Maximum Bit Rate:80Mbps Support Field Coding
MPEG-4	MPEG4	File Format: AVI, MKV, MP4, MOV, 3GP	V			Supported Image Size: 48x48pixels to 1920x1088pixels Maximum Frame Rate:30fps Maximum Bit Rate:38.4Mbps (1) Not support MS MPEG4 v1/v2/v3 (2) Not support GMC
H.264/AVC	H.264	File Format: AVI, MKV, MP4, MOV, 3GP, TS, FLV	V			Supported Image Size: 48x48pixels to 4096x2304 pixels Maximum Frame Rate:4K@ 25 fps, 1080P@60fps Maximum Bit Rate:30Mbps(4K CAVLC) 60Mbps(4K CABAC) 60Mbps(1080p CABAC+CAVLC) (1) Support Field Coding (2) Support MBAFF
MVC	H.264 MVC	File Format: MKV, TS	V			Supported Image Size: 48x48pixels to 1920x1088pixels Maximum Frame Rate: 60fps Maximum Bit Rate: 38.4Mbps Support Stereo High Profile only
H.265/HEVC	H.265/HEVC	File Format: MKV, MP4, MOV, TS	V			Supported Image Size: 64 x 64 pixels to 4096 x 2304 pixels Maximum Frame Rate: 60fps Maximum Bit Rate: 80Mbps (8bit) 50Mbps(10bit) (1) Support Main Profile & Main10 Profile (2) Support 10-bit Color decoding (3) Support Tile & Slice
GOOGLE VP8	VP8	File Format: WEBM, MKV	V			Supported Image Size: 48x48pixels to 1920x1088pixels Maximum Frame Rate: 30fps Maximum Bit Rate: 38.4Mbps
H.263	H.263	File Format: 3GP, MOV, MP4	V			Supported Image Size: SQCIF(128x96), QCIF(176x144), CIF(352x288), 4CIF(704x576) Maximum Frame Rate: 30fps Maximum Bit Rate: 38.4Mbps Not support H.263+
VC-1	VC-1	File Format: WMV, ASF, TS, MKV, AVI	V			Supported Image Size: 48x48pixels to 1920x1088pixels Maximum Frame Rate: 30fps Maximum Bit Rate: 45Mbps
MOTION JPEG	MJPEG	File Format: AVI	V			Supported Image Size: 48x48pixels to 1920x1088pixels Maximum Frame Rate: 30fps Maximum Bit Rate: 38.4Mbps

Audio Decode

Type	Audio Codec	Container	Decode	Encode	Channel	Remark
MPEG Audio	MPEG1/2/2.5 Audio Layer1/2/3	File Format: MP1, MP2, MP3	V		2	Bit Rate: 8Kbps~320Kbps, CBR and VBR Sampling Rate: 8KHz~48KHz
Windows Media Audio	WMA Version 4, 4.1, 7, 8, 9, wmapro	File Format: WMA	V		2	Bit Rate: 8Kbps~320Kbps Sampling Rate: 8KHz~48KHz Non-support WMA Pro,lossless and MBR
WAV Audio	MS-ADPCM, IMA-ADPCM, PCM	File Format: WAV	V		2	Bit Rate: N/A Sampling Rate: 8KHz~48KHz Support 4bit MS-ADPCM,IMA-ADPCM
OGG Audio	Q1~ Q10	File Format: OGG, OGA	V		2	Bit Rate: N/A Sampling Rate: 8KHz~48KHz
FLAC Audio	Compress Level 0~8	File Format: FLAC	V		2	Bit Rate: N/A Sampling Rate: 8KHz~48KHz
AAC Audio	ADIF, ATDS Header AAC-LC and AAC-HE , AAC-ELD	File Format: AAC, M4A	V		5.1	Bit Rate: N/A Sampling Rate: 8KHz~48KHz
AMR Audio	AMR-NB, AMR-WB	File Format: 3GP	V		1	Bit Rate: AMR-NB 4.75~12.2Kbps@8KHz AMR-WB 6.60~23.85Kbps@16KHz Sampling Rate: 8KHz, 16KHz
MIDI Audio	MIDI Type 0 and 1, DLS version 1 and 2, XMF and Mobile XMF, RTTTL/RTX, OTA, iMelody	File Format: XMF, MXMF, RTTTL, RTX, OTA, IMY	V		2	Bit Rate: N/A Sampling Rate: N/A

Audio Encode

Type	Audio Codec	Container	Decode	Encode	Channel	Remark
AMR Audio	AMR-NB, AMR-WB	3GPP		V	2	Bit Rate: 4.75Kbps~12.2Kbps, CBR Sampling Rate: 8KHz, 16KHz
AAC Audio	AAC-ADTS-LC	AAC, 3GPP, Mpeg2TS		V	1	Bit Rate: 4.75Kbps~ 60 Kbps, CBR Sampling Rate: 8KHz~44.1KHz

Image Decode

Type	Image Codec	Photo	Decode	Encode	Channel	Remark
JPEG	JFIF file format 1.02	File Format: JPG, JPEG	V			Supported Image Size: 48x48pixels to 8176x8176pixels (1) Not Support Non-interleaved Scan (2) Software support SRGB JPEG (3) Software support Adobe RGB JPEG
BMP	BMP	File Format: BMP	V			Supported Image Size: Limited by actual memory available
GIF	GIF	File Format: GIF	V			Supported Image Size: Limited by actual memory available
PNG	PNG	File Format: PNG	V			Supported Image Size: Limited by actual memory available

Image Encode

Type	Image Codec	Photo	Decode	Encode	Channel	Remark
JPEG	JPEG Baseline	File Format: JFIF file format 1.02	V			Supported Image Size: 96x32pixels to 8176x8176pixels Maximum Data Rate: 90Mpixels/Second

NOTES:

- Sound or video may not work if the contents have a standard bit rate/frame rate above the compatible Frame/sec listed in the table above.
- Video content with a Bit rate or Frame rate larger than the rate specified in the table above can cause choppy video during playback.

5. Cleaning

Box Cleaning Instructions

Before cleaning, please unplug from power source!

- If the box becomes dirty, wipe the box with a soft, dry cloth.
- If the box is extremely dirty, soak a lint-free cloth in a mild detergent solution. Wring the cloth to remove as much moisture as possible. Wipe the box. Use another dry cloth to wipe over until the surface is dry.
- Do not allow any water or detergent to come into contact with the surface of the Smart Signage Media Player. If water or moisture gets inside the unit, operating problems, electrical and shock hazards may result.
- Do not scratch or hit the box with fingers or hard objects of any kind.
- Do not use volatile substances such as insect sprays, solvents and thinners on the box.
- Do not place anything made from rubber or PVC near the box for any extended periods of time.

6. Technical Specifications

In/Out Terminals:

Item		Specifications
RS232C	RJ-45 Jack x 2 (8 pin)	RS232C In/Out
RJ-45	RJ-45 Jack x 1 (8 pin)	10/100M LAN Port
HDMI out	HDMI x 1 (18 pin)	Digital RGB: TMDS (Video + Audio) MAX: Video - 720p, 1080p, 3840 x 2160/60 Hz
USB Input	USB2.0 TypeA x2	USB2.0

General:

Item		Specifications
Power Input		DC 12V
Power Consumption (Max)		32 W When USB maximum loading
Power Consumption (typ.)		<10 W
Power Consumption (Off)		<0.5 W
Connectivity		802.11 ac/a/b/g/n 2T2R Wi-Fi
RJ45		10/100M
Dimensions [W x H x D]		200.0 x 30.0 x 135.0 mm
Weight		0.41 Kg
Gross Weight		1.3 Kg
Gross Weight (without adapter)		1.12 Kg

Environmental Condition:

Item		Specifications
Temperature	Operational	0 ~ 40°C
	Storage	-20 ~ 60°C
Humidity	Operational	20 ~ 80% RH (No condensation)
	Storage	5 ~ 95% RH (No condensation)
Altitude	Operational	0 ~ 3,000 m
	Storage / Shipment	0 ~ 9,000 m

Specifications are subject to change without notice.